



CLASSIC 125 KHZ / EM4200 READER

PRODUCT DISCONTINUATION NOTIFICATION

Date of issuance: July 14, 2023

PDN number: PDN-230530-01

DocRev: 01

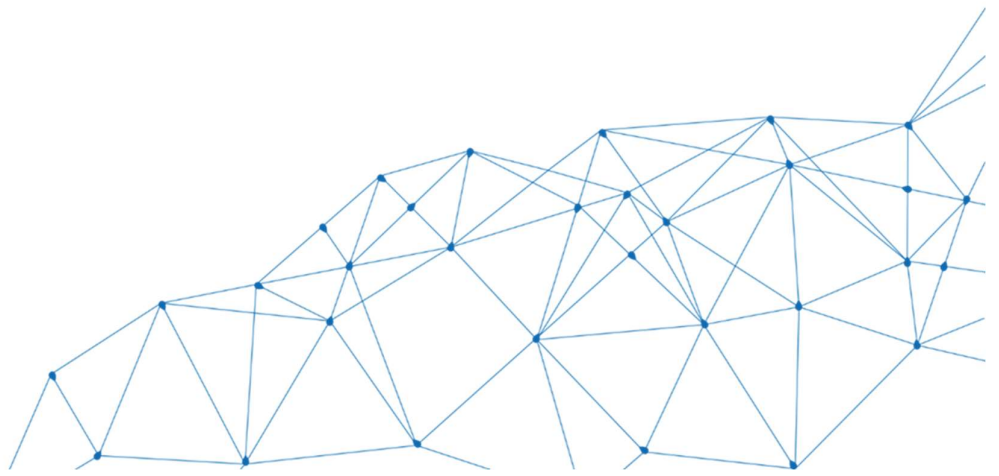


TABLE OF CONTENTS

1	INTRODUCTION.....	2
1.1	DISCONTINUATION INFORMATION	2
1.2	REVISION HISTORY	2
2	PARTS AND PRODUCTS AFFECTED.....	3
3	SUCCESSOR	4
4	TIMELINE.....	5
5	CONTACT	6

1 INTRODUCTION

1.1 DISCONTINUATION INFORMATION

This discontinuation notice informs that sesamsec is discontinuing the manufacture of a number of products. All affected products and associated part numbers are listed in this document.

This notification is intended to inform our customers and partners, so they have the opportunity to respond and modify their product portfolio accordingly. Should you have any further questions regarding this product discontinuation, we stand ready to assist you at any stage, in order to minimize the impact of this product discontinuation on your business.

1.2 REVISION HISTORY

VERSION	CHANGE DESCRIPTION	EDITION
01	First edition	05/2023

2 PARTS AND PRODUCTS AFFECTED

The PDN comprises specific types of Classic 125 kHz / EM4200 Reader products. This relates to both, the OEM PCBs (i.e. modules) and the housing versions. A certain amount of product variants and derivatives are affected, including customer-specific derivatives.

The product discontinuation includes variants, and accessories items that differ among others by different cable connectors, firmware options, housing colors, etc. The common product name is **Classic 125 kHz / EM4200**, with optional amendments to this name.

PART NUMBER	PRODUCT
HFS-LWA-AEB	Classic 125 kHz / EM4200 Reader, aluminum anodized brown
HFS-LWA-APS	Classic 125 kHz / EM4200 Reader, aluminum powder coated silver
HFS-LWA-APS/AW	Classic 125 kHz / EM4200 Reader, aluminum powder coated silver, interface: AW
HFS-LWA-APS/CDA	Classic 125 kHz / EM4200 Reader, aluminum powder coated silver, interface: CDA
HFS-LWA-APS/CDA2	Classic 125 kHz / EM4200 Reader, aluminum powder coated silver, interface: CDA2
HFS-LWA-APS-D	Classic 125 kHz / EM4200 Reader, aluminum powder coated silver, improved reading range
HFS-LWA-MPL	Classic 125 kHz / EM4200 Reader, polished lacquered brass
HFS-LWA-MVG	Classic 125 kHz / EM4200 Reader, gold-plated brass
HFS-LWA-RAL	Classic 125 kHz / EM4200 Reader, powder coated RAL
HFS-LWA-RAL/CDA	Classic 125 kHz / EM4200 Reader, powder coated RAL, interface: CDA
HFS-LWA-RAL/CDA2	Classic 125 kHz / EM4200 Reader, powder coated RAL, interface: CDA2
HFS-LWA-RAL/CDW	Classic 125 kHz / EM4200 Reader, powder coated RAL, interface: CDW
HFS-LWA-RAL-D	Classic 125 kHz / EM4200 Reader, powder coated RAL, improved reading range
HFS-LWA-SO	Classic 125 kHz / EM4200 Reader, milled housing
HFS-LWA-SO/CDA2	Classic 125 kHz / EM4200 Reader, milled housing, interface: CDA2
HFS-LWA-SO/CDW	Classic 125 kHz / EM4200 Reader, milled housing, interface: CDW

3 SUCCESSOR

There are no successors for readers with interface. If you need any consulting, please contact sesamsec sales.

PRODUCT	PART NUMBER	SUCCESSOR	PART NUMBER
Classic 125 kHz / EM4200 Reader, aluminum anodized brown	HFS-LWA-AEB	Classic 125 kHz / EM4200 Reader, powder coated white	HFS-LWA-APW
Classic 125 kHz / EM4200 Reader, aluminum powder coated silver	HFS-LWA-APS		
Classic 125 kHz / EM4200 Reader, aluminum powder coated silver, improved reading range	HFS-LWA-APS-D		
Classic 125 kHz / EM4200 Reader, polished lacquered brass	HFS-LWA-MPL		
Classic 125 kHz / EM4200 Reader, gold-plated brass	HFS-LWA-MVG	Classic 125 kHz / EM4200 Reader, aluminum anodized silver	HFS-LWA-AES
Classic 125 kHz / EM4200 Reader, powder coated RAL	HFS-LWA-RAL		
Classic 125 kHz / EM4200 Reader, powder coated RAL, improved reading range	HFS-LWA-RAL-D		
Classic 125 kHz / EM4200 Reader, milled housing	HFS-LWA-SO		

4 TIMELINE

Last time buy date

This date represents the last opportunity to place an order with sesamsec. All orders placed before and including the specified date will be accepted. All orders placed after this date will not be accepted, you will have to switch directly to the substitute product.

Last time delivery date

After this date, the specified discontinued products will no longer be shipped.

End of maintenance

Any maintenance or repair of the product no matter HW or SW will not be performed anymore after this date. Maintenance includes, but is not limited to the following operations:

- Fixing of small errors "bugs" in the SW (Non-Breaking Bugs)
- Implementation of new features and functions (mostly SW)
- Development / customization of SW and HW to maximize performance, stability and security

End of support

At the end of support date, all support of the product is no longer available. This includes, but is not limited to, immediate support to the partner or customer for technical issues in the field. Furthermore, support including technical assistance for existing or new installations. SLAs (Service Level Agreement) contracts are of course observed by sesamsec as long as they apply and until they expire.

DESCRIPTION	DATE
LAST TIME BUY DATE	Sept 30, 2023
LAST TIME DELIVERY DATE	Due to current chip allocation the last delivery date must be aligned individually
END OF MAINTENANCE	Jan 31, 2024
END OF SUPPORT	April 30, 2024

5 CONTACT

For technical inquiries or questions, please contact:

support@sesamsec.com

For commercial inquiries or questions, please contact:

info@sesamsec.com

sesamsec GmbH
Finsterbachstrasse 1 • 86504 Merching • Germany
P +49 8233 79445-0
F +49 8233 79445-20
info@sesamsec.com • sesamsec.com

sesamsec reserves the right to change any information or data in this document without prior notice. sesamsec declines all responsibility for the use of this product with any other specification but the one mentioned above. Any additional requirement for a specific customer application has to be validated by the customer himself at his own responsibility. Where application information is given, it is only advisory and does not form part of the specification. Disclaimer: All names used in this document are registered trademarks of their respective owners.